

HELPING THE

ONE

FIND THEIR WAY HOME



JH REACH

2021 IMPACT REPORT

YOU DID NOT CHOOSE ME, BUT I CHOSE YOU AND APPOINTED YOU SO THAT YOU MIGHT GO AND BEAR FRUIT—FRUIT THAT WILL LAST—AND SO THAT WHATEVER YOU ASK IN MY NAME THE FATHER WILL GIVE YOU. THIS IS MY COMMAND: LOVE EACH OTHER.

— JOHN 15: 16-17



READ ABOUT
OUR IMPACT WITH
ONE HOPE ON PAGE 26

Table of Contents

JH REACH OVERVIEW	4
2021 RECAP	5
EMPLOYEE REACH	6
Employee Funnel	7
Employee Care	8
OUTREACH	10
Local Outreach	12
Hope for the Holidays	13
Transformative Leadership	14
Varsity Leadership Academy	15
Mission Trips	16
Hope Field	18
Harvest House	19
GIVING TO THE KINGDOM	20
Local Impact Partners	22
Local Projects	23
National and Global Impact Partners	24
Global Projects	26
Marketplace Ministry	30

JH REACH *Overview*

OUR PURPOSE

Reach People for Christ and
Give to the Kingdom.

OUR CORE VALUES

JH Reach is a ministry of the JH Family of Companies. JH Reach leads and coordinates the initiatives and processes behind our purpose to Reach People for Christ and Give to the Kingdom. The impact of JH Reach is not just the founders John and Tracy Houston's heart and vision or one department's focus. It's truly the collaboration of every company, department, employee, and many partners working together to display love to our coworkers, our community, and people around the world.

One of the greatest privileges here at the JH Family of Companies is the opportunity to be a part of something bigger than ourselves. Our role is more significant than our job, and our purpose is greater than a paycheck. We get to be a part of helping people find their way Home by being joyful, hope-filled, loving guides. We live out this purpose every day in our relationships through our core values of **GENEROUS LOVE, 2ND MILE SERVICE, RELENTLESS PURSUIT OF EXCELLENCE,** and **HONEST COMMUNICATION.** Together, we get to be a part of bringing hope to a desperate world.

JH Reach focuses on reaching first to our employees and their families in the local communities that we work and live in, and communities around the world through our global partnerships. In addition to our employees and outreaches near and far, JH Reach aims to inspire and equip other leaders in the marketplace to hear God's voice and live out their faith in obedience to reach others for Christ through our marketplace reach initiatives.

REACH: noun

1. an act of reaching out in order to impact others
2. the extent or range of influence and impact

2021 Recap

The JH Family of Companies includes six businesses: John Houston Homes, Trinity Oaks Mortgage, JH Development, Precise Title Company, JH SFA, and Suit & Shepherd.

"What started as a custom home building company in 2005 has grown very fast, and we now have more than 280 employees and 6 companies in the JH Family of Companies," said John Houston, founder and CEO of the JH Family of Companies. "We decided to launch a rebrand because we wanted to make sure the vision we have had from the start is clear for all employees at every company. The highest calling of our brand is to Help People Find Their Way Home, and every employee can be a part of this purpose."

HOW JH REACH HELPED PEOPLE FIND THEIR WAY HOME IN 2021

- » As an extension of our employees, we were able to help build, rebuild, and restore homes for many who didn't have a home or were rescued from unsafe conditions in places like El Salvador, Nepal, and New Orleans.
- » We also helped youth in the foster system find shelter through the Harvest House. Additionally, we helped single mothers and their children find support, refuge, and hope through many of our local partners.
- » Together, we were able to reach over 2 million youth and children around the world with the hope of God's Word through our partnership with One Hope.

We aim to do our part, and it's incredible to see what we get to be a part of together!

HELPING THE ONE FIND THEIR WAY *Home*



Employee *Reach*

Our employees are our greatest strength, and it's a joy to live life together. JH Reach is not just a ministry within the JH Family of Companies but a department extending beyond our team to provide resources and opportunities to serve and love our employees and families. We hope to strengthen and equip every employee to accomplish the vision to help people find their way Home.



THE ONE

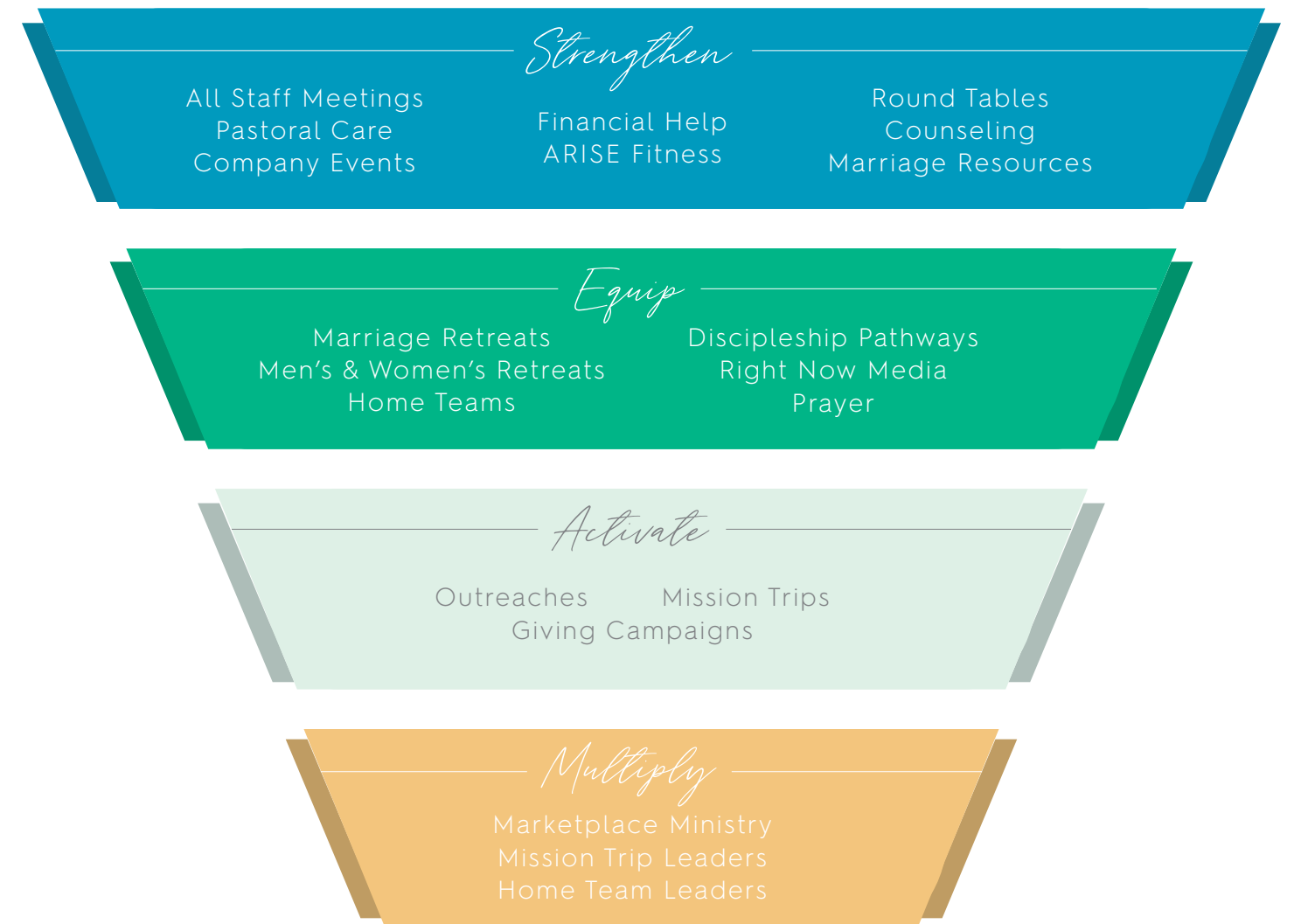


John Houston baptizing Paul Garcia

Paul Garcia is just one of the many employees this desire and vision have impacted. After a divorce and the experience of a high-stress workplace, Paul joined our family of companies. But, while he was looking forward to a better work environment, he didn't know that he would find what he really needed.

Paul attended one of our leadership retreats in 2020. After hearing CEO John Houston's story and heart for God, he responded and surrendered his life to Christ. Paul got baptized in 2021. Anyone who knows Paul has seen the shift and transformation. While he's always been a hard worker and high performer, the lost and broken man he once was has been replaced by joy and contentment. He has found his true home and is thankful for the family he's found within our companies.

HELPING PEOPLE FIND THEIR WAY *Home*



REACHING PEOPLE FOR *Christ* & GIVING TO THE *Kingdom*

Because We Care

Here are some of the ways JH Reach facilitates care for our employees:



CHAPLAIN CARE provides prayer and support for employees going through hard times.



HOME TEAMS connect employees to their coworkers and help them grow in their faith with others in a small group setting.



COUNSELING helps employees and their families navigate the challenges they are facing.



MARRIAGE RETREATS give couples a chance to enjoy quality time together and be strengthened with resources to grow their relationship.



RIGHT NOW MEDIA has a video library that enriches employees and their families through practical and spiritual content.



MEN'S & WOMEN'S RETREATS help connect employees outside of a work environment to find rest, community, and purpose.



OUR GENEROUS LOVE FUND can help employees going through a financial crisis.



IT'S A *joy* TO LIVE LIFE TOGETHER



“

WE'RE NOT IN THE HOME BUILDING, MORTGAGE, LAND, OR TITLE BUSINESS;

we are in the people business.

- John Houston ”



Outreach

We want to **HELP THE ONE FIND THEIR WAY** Home here in the US and around the world.



JH Reach partners with local and global community leaders and organizations to
restore and bring hope
to individuals, families, and communities where we work and serve.

We want to help people find their way Home here in the US and around the world, and we get to serve with some incredible community organizations and global partners to do so.

We believe the Kingdom of God moves at the speed of relationships; therefore, unity and collaboration are keys to our strategy of helping people find their way Home in our community.

We contribute financially and relationally, and many of our employees are active members of the community through mentorship, serving on non-profit boards, and utilizing their skills and resources. Through outreaches and Reach trips, our employees can grow in community, empathy, and a greater sense of purpose.

We get to use our influence, passion, and resources to help strengthen those who are doing good, strategic, front-line work with those in need in our area.

Local Outreach

We partner and collaborate with a number of organizations in the communities surrounding DFW. We are honored to serve alongside these amazing outreaches with the mission of reaching people for Christ.

COMMUNITY OUTREACH PARTNERS



THE ONE



Wes Dorough

MENTORS CARE

WES DOROUGH AWARDED OUTSTANDING MENTOR

Mentors Care connects at-risk high school students with adult volunteers to mentor students toward graduation and purposeful lives.

Mentors Care presented its first-ever Outstanding Mentor award to our very own Wes Dorough, a dedicated mentor for the organization, out of more than 225 mentors across seven North Texas high schools.

Wes has been a successful mentor for Mentors Care for three years. As a result, his former students have graduated, and two are currently attending college. One was from the Dallas Juvenile Justice Alternative Learning Program (JJAEP). After spending the school year with Wes, the student graduated from high school early, registered for college, and is currently studying to be an accountant.

373 MENTORS | 478 STUDENTS

100% SENIOR GRADUATION RATE

Hope for the Holidays

During our Hope for the Holidays campaign, our employees went above and beyond in donating time and money! We were thrilled to exceed our goal and raise **\$21,140** for **six** different organizations in December. Through our partnerships, our employees helped families find their way home as they demonstrated the love of Christ.



OVER 30 EMPLOYEES + FAMILIES
SERVED AT LOCAL OUTREACHES

\$21,000+

TOTAL FUNDS RAISED BY OUR EMPLOYEES

6 OUTREACHES IMPACTED



Transformative Leadership in Ellis County

550+

Over 550 people went through Transformative Leadership Tables in their place of business and vocation throughout Ellis County.

Local leaders have worked with the John Maxwell team to implement a leadership round table curriculum. They have hosted several leadership conferences, facilitated two city projects, and spurred collaboration in the county to further leaders and transform our communities. As a result, the leadership cabinet for Ellis County researched to determine needs and potential next steps for a county-wide collaboration. This research led to a partnership with Unite DFW and Unite Ellis to inform, connect and equip those in our county to care for local needs. For this inaugural year, Unite Ellis will focus on:

RELATIONAL
INFRASTRUCTURE

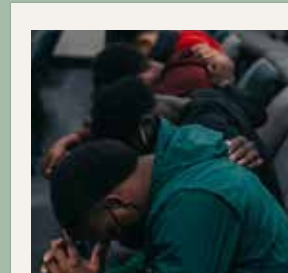
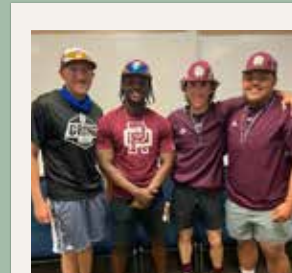
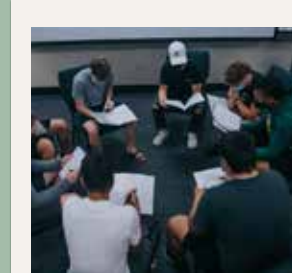
COUNTY
CONVENE

GLOO CONNECT
(NAVIGATORS/EXPLORERS)

CATALYST FOCUS:
MENTAL HEALTH



Varsity Leadership Academy



HIGHLIGHT

18 Red Oak baseball team players participated this year, and **TWO WERE BAPTIZED!** Coach Johnson is a great role model for these young athletes.

In reflecting with his team, Coach Johnson encouraged them, "Guys, we won tonight. It doesn't matter if we win on the field because we won here.

EVERY SINGLE ONE OF YOU ARE BETTER MEN because of this season, and that's bigger than winning a baseball game."



- » The Varsity Leadership Academy offers mentorship, Values training, and unity empowerment to sports and clubs leaders as community leaders facilitate meetings to use their experience in influencing student leaders.
- » We want to empower the next generation to mentor and lead others on their team, school, and community. We are equipping student leaders with vital recourses to aid and connect those in their school with leaders and resources in the community that can transform their lives.

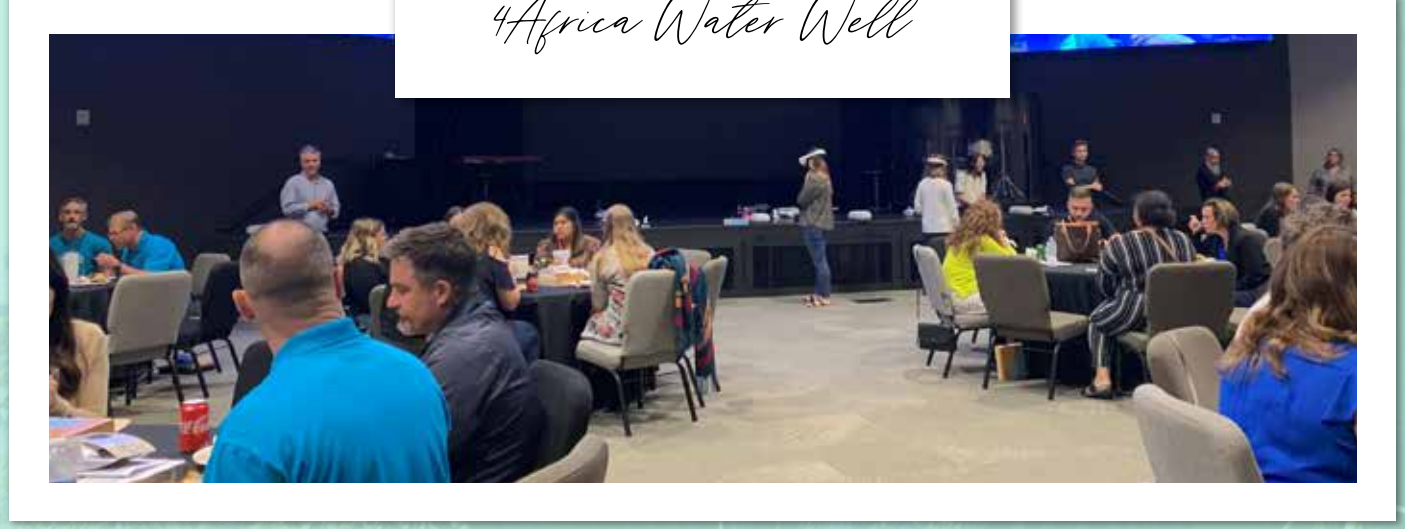


New Orleans Mission Trip

We had **8** extraordinary employees from the John Houston Family of Companies serve and share the love of Christ in New Orleans. The team worked alongside Samaritan's Purse to bring disaster relief to **3** homes. Homeowner Mr. Ellis is a disabled veteran who found it challenging to find hope after living on the street and in motels for over two months. After experiencing the love from the team and hearing about the hope they had, **Mr. Ellis found his way Home by receiving Christ as his Savior!**



4Africa Water Well



THE ONE



Mr. Ellis



Virtual Mission Trip

One of our partners, 4Africa, enabled our employees to experience their work in Uganda with a virtual reality headset. As a result, we were able to virtually travel to east Africa and experience building a water well, similar to the one JH Reach helped sponsor in the Ugandan village of Ungulevo. Along with virtually traveling to Uganda, our employees were able to get a taste of food inspired by El Salvador, Mexico, and Spain and hear stories of how they helped the one find their way Home.

Hope Field

More Than a Game: Tulsa, OK

More Than a Game has been using the sport of soccer to reach neglected, vulnerable, and refugee youth with the Hope of the Gospel through weekly discipleship and outreaches. These partnerships can provide fields at a considerably discounted price and provide training for running programming, outreaches, tournaments, and discipleship that will have a profound and long-lasting impact on the next generation.

While our primary goal is to reach youth, we know the impact is far-reaching in these neighborhoods. For example, Coach Gilberto lives in the Tulsa community, where we recently opened a Hope Field. His story highlights how God places us in the right place at the right time to help those in many generations find their way Home.

Coach Gilberto drove by on opening day and stopped to inquire about the purpose and use of the field. As Chief Ministry Officer Bobby Parks explained our vision behind the ministry, Coach Gilberto excitedly explained that he was already involved in coaching soccer to those we wanted to serve. It became clear that God was putting the pieces together.

Several months later, Bobby had the opportunity to lead Coach Gilberto to the Lord as they participated in a training session together. The following week, Coach Gilberto partnered with a local church to share the message of Jesus, and 22 young people made decisions for Christ. He now continues to invest in kids as he runs weekly training sessions and shares his faith when he has the opportunity. As a result, more students have found their way Home as God continues to draw them to Himself through the work of the Hope Fields, More Than a Game, and the efforts of volunteers like Coach Gilberto.



THE IMPACT OF ONE FIELD:
22 YOUNG PEOPLE
FOUND CHRIST



Coach Gilberto + Bobby



Harvest House

Harvest House helps care for youth in the foster care system who are without placement. As the system is often maxed out and overwhelmed, through our partnership, we're able to offer these kids a place to stay and share with them God's love while they are in-between homes. A group of our employees even had the opportunity to spend a day with this incredible organization as we repaired and prepared a home to welcome these children.



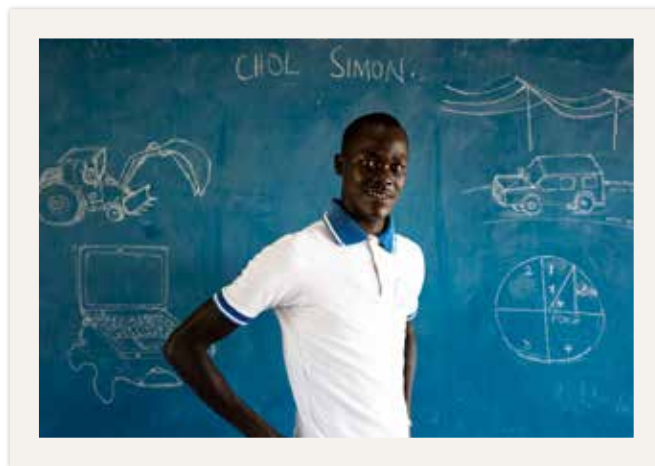
THE ONE

For Valentine's Day, the Harvest House team held a "Galentine's Dinner" for the girls in their care. They brought in decorations and nice tableware and gave gifts to the girls. They had a fun night doing "girly" things and sharing how much their Father God loves them.



*Name changed to protect the privacy of the individual.

13-year-old Sarah* was there that night. Sarah was hospitalized for a month over Christmas, sent to a residential treatment center, and then hospitalized again before being placed into custody and brought to Harvest House. This young lady came in afraid, quiet, and guarded. But, by the end of the night, she was giggling, jumping on the bed, and making "Tik Tok" videos with the others. God knew what Sarah needed, and the team was there to love her and speak life over her.



Giving to the Kingdom

We believe that all we have is a gift from God (Psalm 24:1). We are stewards of His resources. We have received much, so we respond in love to give back to God and others as He leads and gives opportunity.

We aim to strategically invest in God's Kingdom through ministries that make an eternal impact through the following areas:



LOCAL CHURCH



NEXT GENERATION



WORD OF GOD



MARKETPLACE MINISTRY

**THE EARTH IS THE LORD'S,
AND EVERYTHING IN IT,
THE WORLD, AND ALL
WHO LIVE IN IT.**

PSALM 24:1

Local Impact Partners



2,373 FAMILIES RECEIVED FOOD

2,479 CHILDREN RECEIVED FOOD + HYGIENE KITS + SCHOOL SUPPLIES

Harvest House

We partnered with Harvest Family Life Ministries to serve some of the most vulnerable children in our region. We helped educate 19 students and provided food to 2,373 families and hygiene kits, food, and school supplies to 2,479 children. In addition, we helped renovate Harvest House Waxahachie, where the ministry cares for foster children without placement. This work is ongoing and, through our partnership, hearts and homes are opening, children are healing, families are uniting, and lives are changing.

Local Projects

OAKS CHURCH

John Houston Family of Companies partnered with Oaks Church in their accomplishments of:

FOSTER & ADOPTION MINISTRY



25 children in foster care in Oaks homes currently



14 care portal requests filled



27 scholarships to help those in foster care attend camps



120 foster families received meals

SERVE DAY



14 community sites restored and renovated including schools, pregnancy resource centers, SWAAG

TREE OF ANGELS



1000 gifts collected



321 children received gifts

MISCELLANEOUS



15 kits filled with essentials provided for cancer patients undergoing treatment, including handmade quilts and written encouragement

LEADERSHIP DEVELOPMENT



20 business leaders went through a leadership development program that included self-leadership, leadership skills, and communication skills

BENEVOLENCE



128 people helped with benevolence

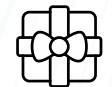


\$27,000 given to people in need



17 handyman projects completed

NIGHT OF WONDER



19 families served at night of wonder

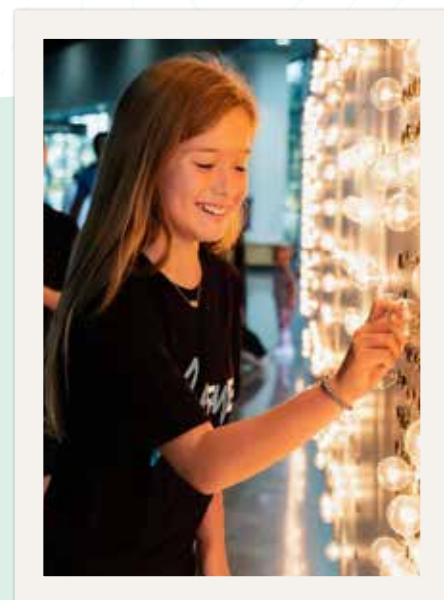
THROUGH OUR PARTNERSHIP

LOCAL IMPACT

Locally, we offered physical, spiritual, and emotional support to single parents and pregnant women in their time of need. We also worked with leaders in Waxahachie to help close the employment gap, resource leaders, equip the next generation, mobilize volunteers, engage residents in resources available to them, and provide training for households to achieve financial health.

OAKS YOUTH

We are passionate about the next generation, and we will continue to prioritize them through services, groups, camps, and mission trips. Oaks Church provides connections from children to young adults through weekend experiences, strategic training, and educational opportunities like Oaks Leadership and Oaks College.



National + Global

Impact Partners

GO INTO ALL THE WORLD AND PREACH THE GOSPEL TO ALL CREATION. MARK 16:15



Global Projects



One Hope has impacted 1.8 billion youth with the word of God. Since 2012, through our partnership we have reached 12 million youth.

We have been honored to partner with One Hope for years. One Hope has a mission to reach every child in the world with the Word of God. We partner with them through funding and mission trip participation.



316 ACTIVE PROGRAMS • 118 ACTIVE COUNTRIES • 177 DIFFERENT LANGUAGES
1.8 BILLION CHILDREN & YOUTH REACHED



Following WWII, Croatia was a communist nation of Yugoslavia. The former communist president discouraged outward displays of religion as part of his effort to meld ethnic identities. Since 1990, Croatia has been rebuilding their faith after declaring their independence. Crkva Cjelovitog Evanđelja (CCE) is an active, interdenominational movement established in 1989.

We partnered with the Croatian Evangelistic Outreach to help them raise enough money to buy their first-ever building. In October of 2021, they purchased a building and since then used it as a place to share the gospel, encourage believers, worship, host various programs and bring true transformation to the community. CEO being able to own their own building to use it as a Christian outreach center is a huge testimony that God is shining and working through that church there.



4Africa exalts Jesus Christ by restoring and empowering African people to become good stewards of their community and country - imparting biblical principles through sustainable clean water and preventative health initiatives while educating future leaders, all with a heart for service.

Through our partnership with 4Africa, we're able to empower future leaders with high-quality education, character development, discipleship, and entrepreneurship skills. We were also able to impact the Makindi community through the construction of their community water well.



Makindi Community Well

Donated by John Houston Family of Companies
 Date Completed: July 20th, 2021
 Village: Ungulevo | Country: Uganda
Number of Users: 353

Student Impact

- » **47** Seniors Graduated
- » **89%** achieved their university-readiness certificate based on UACE results
- » **143** students in universities in Uganda and South Sudan, obtaining various degrees



THE ONE



Bidali Henry

Bidali Henry grew up in an area ravaged by civil war and tribal conflict in South Sudan. Growing up as a displaced refugee, he had little hope for a bright future. However, through the Leadership Academy of South Sudan, he pursued academics while serving as the secretary for the student council. He went on to university, where he received a degree in Telecommunications and Marketing intending to strengthen the telecommunication industry in South Sudan. Bidali shared, "The character development lessons I learned at the academy were the foundation that has helped me during my time in office as students' coordinator. I am forever grateful for the opportunities of school, character training, and a chance to serve others."

Global Projects



Involved International currently serves in East Africa and the Francophone world through church planting initiatives, pastoral training, educational resourcing, strategic partnerships, and community outreach. They believe a healthy local church is God's solution to the challenges of this generation.

We partnered with them to serve one of the most marginalized groups in Burundi. Through funding, we provided employment and supplies to build a school for the Batwa people. This school will provide educational opportunities for years to come and reach hundreds of youth with the hope of the Gospel.



VENTURE

Venture serves in areas of the world that are the least reached and least resourced by partnering with local leaders in those communities to end some of the world's greatest injustices. Venture offers long-term solutions to under served communities through food, shelter, farming education, and local church planting.



THE ONE

Through our partnership with Venture, we helped a family Nepal find their way Home. This home has been transformational for this family. The mother is a widow. She now has stable housing and is learning about finances and savings. Her children are no longer at risk of being sold into slavery due to financial hardship. We also helped provide safety to 728 vulnerable children through safe houses and border patrol stations.



ENLACE equips local churches in El Salvador, Nepal, Guatemala, and the U.S. to reach and transform their communities.

In El Salvador 1,266 church and community leaders worked on 52 projects that impacted 74,693 people. Much of the work implemented in 2021 was a continuation of serving the most vulnerable with relief like nutritional aid baskets, agricultural assistance packets, and micro finance loans. All of these efforts are enabling families struggling in severe poverty to address the difficult journey ahead, giving them real hope for a brighter future.

1,266 LEADERS
52 PROJECTS
74,963
PEOPLE IMPACTED

During the worst of the pandemic lockdown, dozens of families in the community of Los Pinos, where 99% of the population lives in poverty, had completely run out of food. Eunice decided to take action with other young leaders from her church, Iglesia Canaan.

The young leaders had years of experience implementing projects like housing, latrines, eco-stoves, and more with Enlace. They dove into their own relief efforts knowing the need was dire and growing each day.

Through the hard work of these leaders, this small church of 70 people combined its own resources with Enlace's donations and sustained approximately 150 families for almost two years.

"We started collecting food from what little we had ourselves. Church members brought beans, rice, bread, eggs, and other food staples as well as clothing. With what little we all brought together there was enough to feed many families. I think God must have been pleased with our efforts because the blessings began to multiply. Truckloads worth of supplies began to arrive in the months after."

-Eunice

THE ONE



Eunice

We believe in sharing our story, experiences, mistakes, and strategies
to help other businesses and marketplace leaders
reach even more for Christ than we could on our own.

Marketplace *Ministry*

In addition to our Employee, Local and Global Reach, JH Reach also aims to inspire and equip others in the marketplace to hear God's voice so that they can know their identity and walk out their purpose. Jesus said, "The Harvest is plentiful, but the laborers are few." (Matt. 9:37)

We believe in encouraging laborers already in one of the largest harvest fields of the world, the marketplace - to fulfill the great commission and make disciples and reach those around them every day in their cubicle, job site, or boardroom.

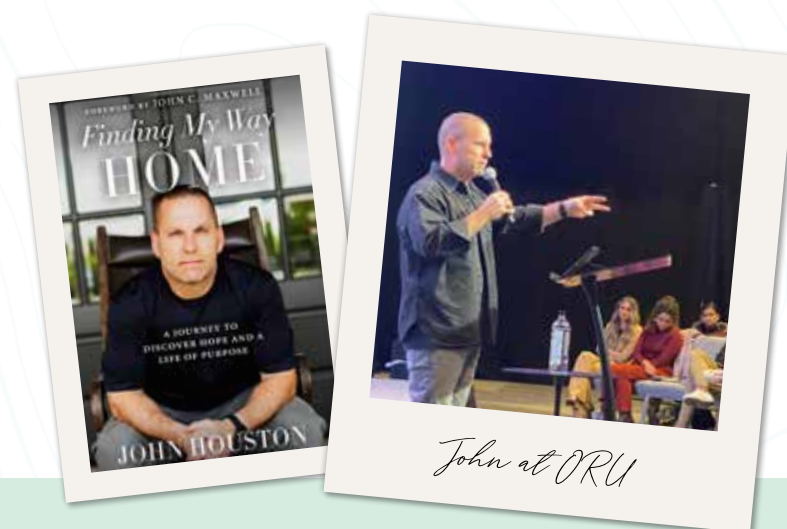


Suit & Shepherd is a spiritually-focused professional resource that helps Christian leaders integrate their faith with their profession and confidently activate God's purpose through their life's work.

JOHN HOUSTON

After facing hardships as a young man that could have permanently derailed his life, John Houston has become a respected and successful business leader who views his companies as a platform to reach people for Christ and support ministries worldwide.

John has learned through the years how to listen to God's voice for direction in his life and business. Following seasons of failure and success, John authentically shares his story through books, blogs, podcasts, and speaking engagements to help other people find their own way Home.



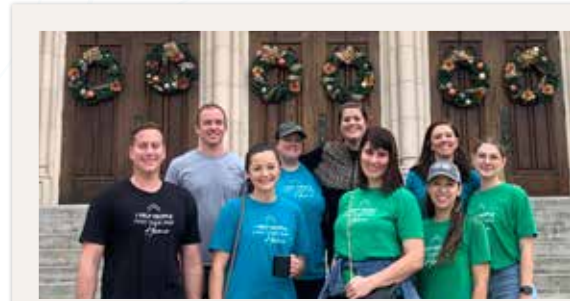
John at ORU

IN 2021:

- » **Over 3,100** *Finding My Way Home* books sold and gifted, with another 4,000 in bookstores.
- » Nearly **23,000 subscribers** or followers of John Houston's blog/social media where he posts weekly to help Christians integrate their faith into every aspect of their lives, including business.
- » John was a guest on 17 different media appearances **reaching over 105,000,000** consumer impressions with his message of hope, restoration, and leading business for kingdom purpose.
- » John was a guest speaker at 13 different live events, **reaching 3,000 people**.
- » **Over 1,000** people participated in our YouVersion devotional about courageous leadership.



*Varsity Leadership Academy:
Red Oak Baseball*



Hope for the Holidays Serve Day



Involved International: Burundi, Africa



Marriage Retreat



Arise Fitness and Nutrition



Hope Field in Tulsa, OK



JH Family Easter Egg Hunt



New Orleans Reach Trip

THANK YOU TO EVERY EMPLOYEE AND
PARTNER OF THE JH FAMILY OF COMPANIES.
YOUR GENEROUS LOVE IS
HELPING PEOPLE FIND THEIR WAY *Home*



JH REACH

JHREACH.COM
INFO@JHREACH.COM

421 CENTURY WAY
RED OAK, TEXAS 75154
UNITED STATES